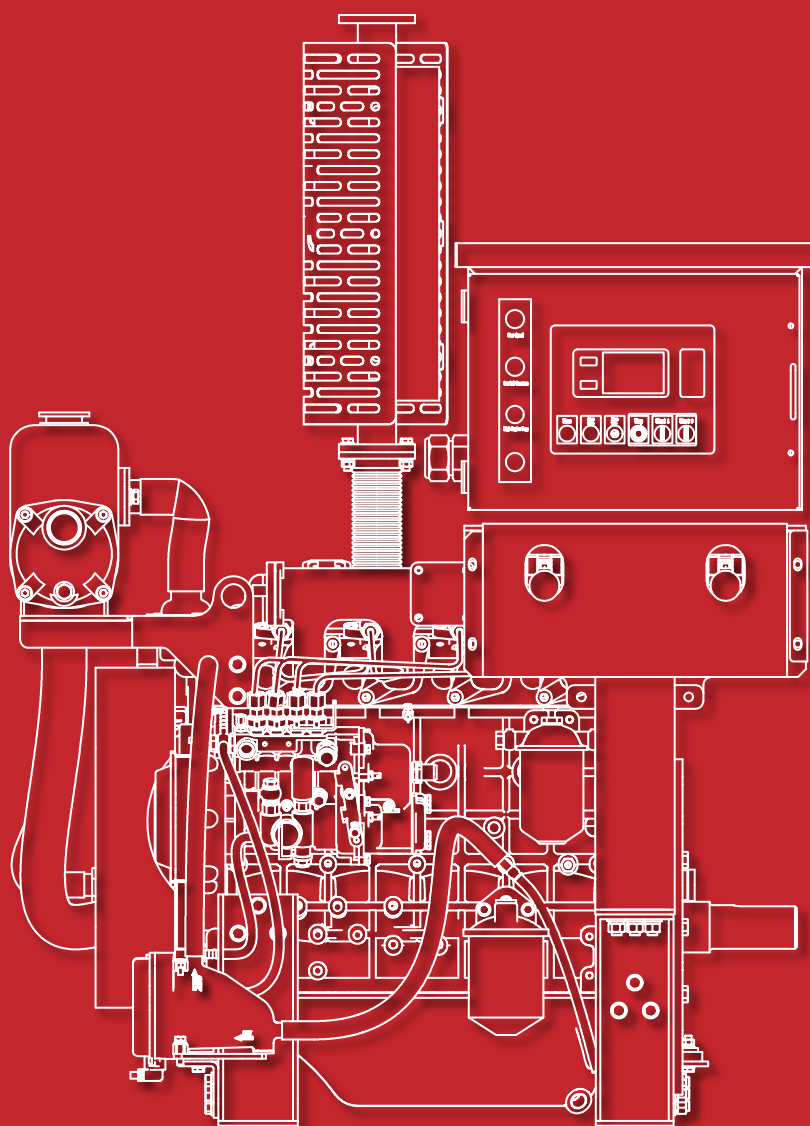




JIUYI FIRE PUMP

DIESEL ENGINES FOR DRIVING STATIONARY FIRE PUMPS (DIESEL ENGINES FOR FIRE PUMPS)



ZHEJIANG JIUYI FIRE TECHNOLOGY CO.,LTD.

32 PANLONG SOUTH ROAD,QUZHOU,ZHEJIANG,CHINA



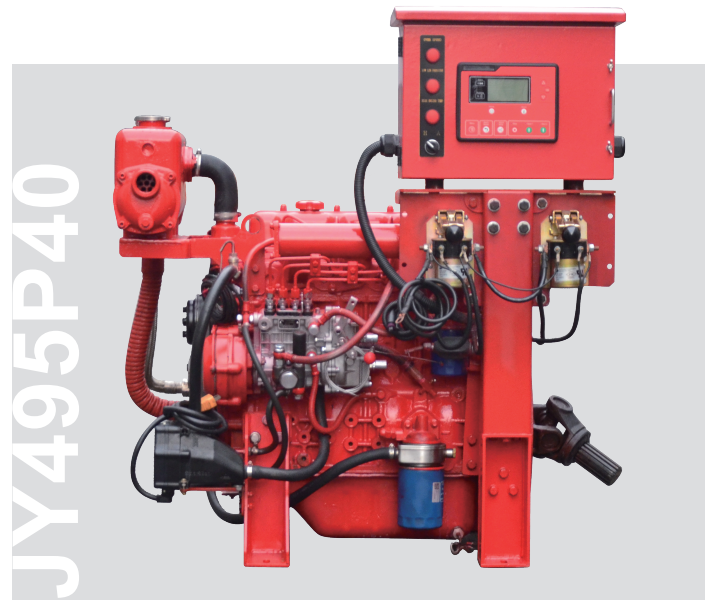
JILIYI FIRE PUMP

JY495P40

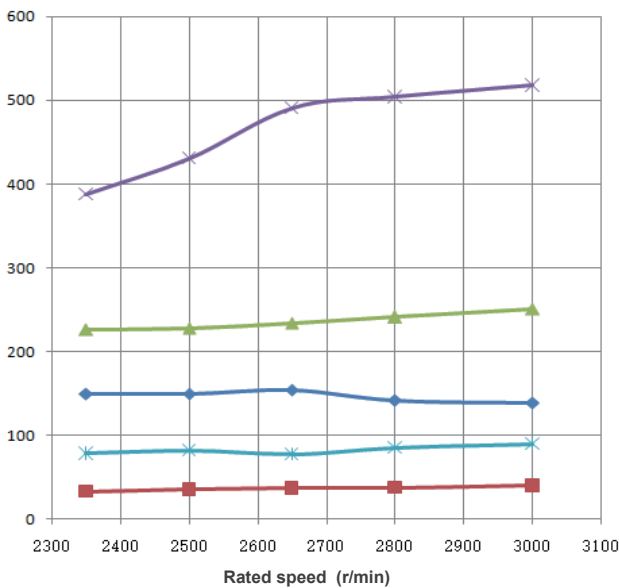
Type: Heat exchange
Inline, Four stroke, Direct injection

Basic parameters

Aspiration	Naturally aspirated
Cylinders No.	4
Bore stroke	95mmx105mm
Total displacement	2.98L
Compression ratio	17.5:1



Performance curve



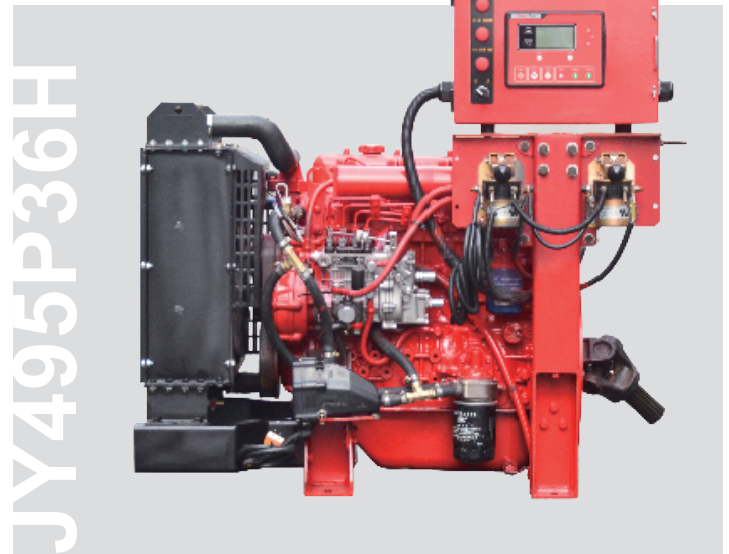
Rated power	54 hp 40 kW	Rated speed	3000 r/min
Rated power	50 hp 37 kW	Rated speed	2650 r/min
Rated power	45 hp 34 kW	Rated speed	2350 r/min
Ldling	750±50 r/min	Rotation direction	Counterclockwise (Viewed from the flywheel end)
Start mode	4.5kW/DC24V Electric Start	Alternator	750W/DC28V

JY495P40

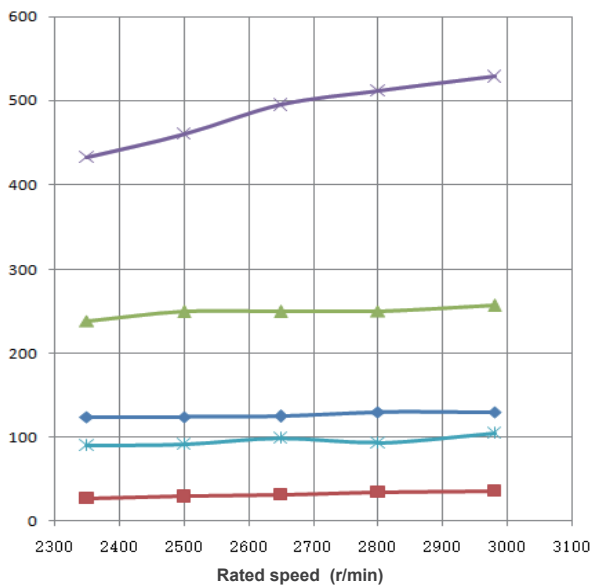
Firing order	Heat exchange	Lubricating Oil	Fuel Grade	Battery model		
1-3-4-2	AH300	CF-4 10W30	NO.2-D	6-QW-100(680) /2 sets/4 pieces		
Raw water flow rate	Specific Fuel Consumption	Lubricating Oil Capacity	Net weight	Dimensions		
				L	W	H
≤360 L/min	≤260 g/KW.h	6.5L	365±10kg	1013 mm	800 mm	1110 mm

Basic parameters

Aspiration	Naturally aspirated
Cylinders No.	4
Bore stroke	95mmx105mm
Total displacement	2.98L
Compression ratio	17.5:1



Performance curve



◆ Torque (N.m) ■ Rated Power (kW) ▲ Fuel consumption (g/kW.h)
 * Lubricating Oil temperature (°C) ✕ Exhaust temperature (°C)

Rated power	49 hp 36 kW	Rated speed	2980 r/min
Rated power	42 hp 32 kW	Rated speed	2650 r/min
Rated power	37 hp 28 kW	Rated speed	2350 r/min
Ldling	750±50 r/min	Rotation direction	Counterclockwise (Viewed from the flywheel end)
Start mode	4.5kW/DC24V Electric Start	Alternator	750W/DC28V

JY495P36H

Firing order	Air filter	Lubricating Oil	Fuel Grade	Battery model		
1-3-4-2	AC52110	CF-4 10W30	NO.2-D	6-QW-100(680) /2 sets/4 pieces		
Raw water flow rate	Specific Fuel Consumption	Lubricating Oil Capacity	Net weight	Dimensions		
				L	W	H
≤360 L/min	≤260 g/KW.h	6.5L	385±10kg	1001 mm	775 mm	1110 mm



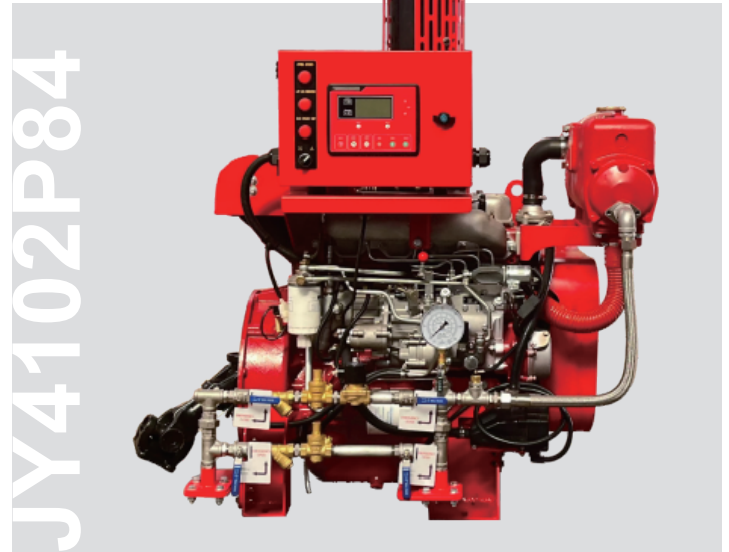
JILUYI FIRE PUMP

JY4102P84

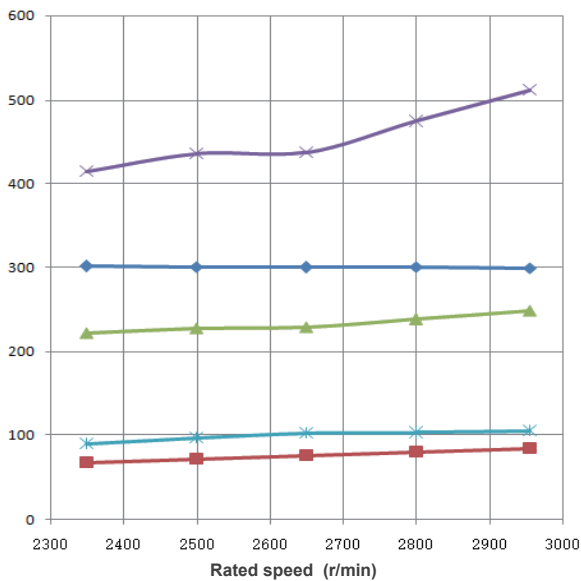
Type: Heat exchange
Inline, Four stroke, Direct injection

Basic parameters

Aspiration	Turbocharging
Cylinders No.	4
Bore stroke	102mmx118mm
Total displacement	3.85L
Compression ratio	17.5:1



Performance curve



◆ Torque (N.m) ■ Rated Power (kW) ▲ Fuel consumption (g/kW.h)
 * Lubricating Oil temperature (°C) ✕ Exhaust temperature (°C)

Rated power	113 hp 84 kW	Rated speed	2955 r/min
Rated power	101 hp 76 kW	Rated speed	2650 r/min
Rated power	90 hp 67 kW	Rated speed	2350 r/min
Ldling	750±50 r/min	Rotation direction	Counterclockwise (Viewed from the flywheel end)
Start mode	5.0kW/DC24V Electric Start	Alternator	750W/DC28V

JY4102P84

Firing order	Heat exchange	Lubricating Oil	Fuel Grade	Battery model		
1-3-4-2	CH300	CF-4 10W30	NO.2-D	6-QW-100(680) /2 sets/4 pieces		
Raw water flow rate	Specific Fuel Consumption	Lubricating Oil Capacity	Net weight	Dimensions		
				L	W	H
≤610 L/min	≤260 g/KW.h	8L	435±10kg	1123 mm	872 mm	1119 mm



JILUYI FIRE PUMP

JY4102P76H

Type: Radiator
Inline, Four stroke, Direct injection

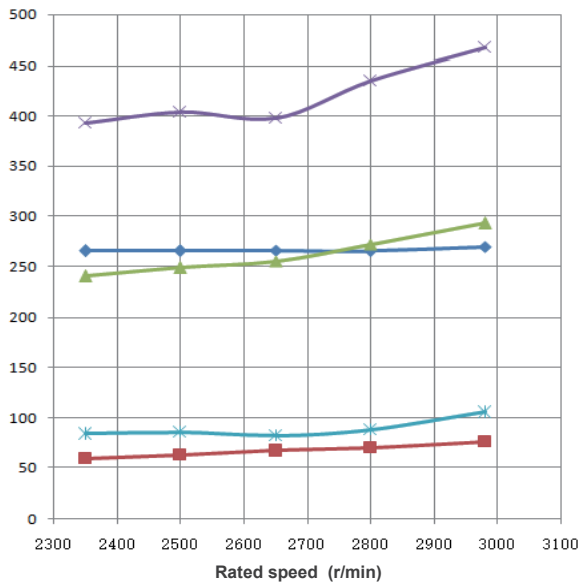
Basic parameters

Aspiration	Turbocharging
Cylinders No.	4
Bore stroke	102mmx118mm
Total displacement	3.85L
Compression ratio	17.5:1

JY4102P76H



Performance curve



◆ Torque (N.m) ■ Rated Power (kW) ▲ Fuel consumption (g/kW.h)
 * Lubricating Oil temperature (°C) ✕ Exhaust temperature (°C)

Rated power	102 hp 76 kW	Rated speed	2980 r/min
Rated power	90 hp 67 kW	Rated speed	2650 r/min
Rated power	79 hp 59 kW	Rated speed	2350 r/min
Idling	750±50 r/min	Rotation direction	Counterclockwise (Viewed from the flywheel end)
Start mode	5.0kW/DC24V Electric Start	Alternator	750W/DC28V

JY4102P76H

Firing order	Air filter	Lubricating Oil	Fuel Grade	Battery model		
1-3-4-2	AC77185	CF-4 10W30	NO.2-D	6-QW-100(680) /2 sets/4 pieces		
Raw water flow rate	Specific Fuel Consumption	Lubricating Oil Capacity	Net weight	Dimensions		
				L	W	H
≤610 L/min	≤280 g/KW.h	8L	465±10kg	1266 mm	826 mm	1119 mm



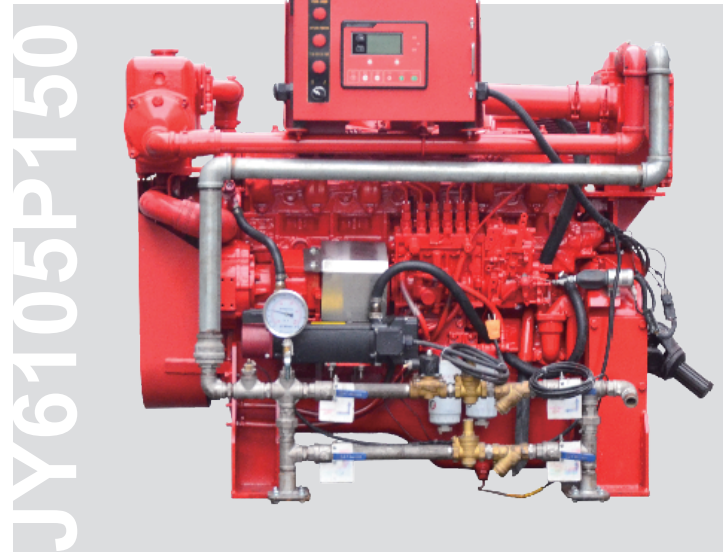
JIUYI FIRE PUMP

JY6105P150

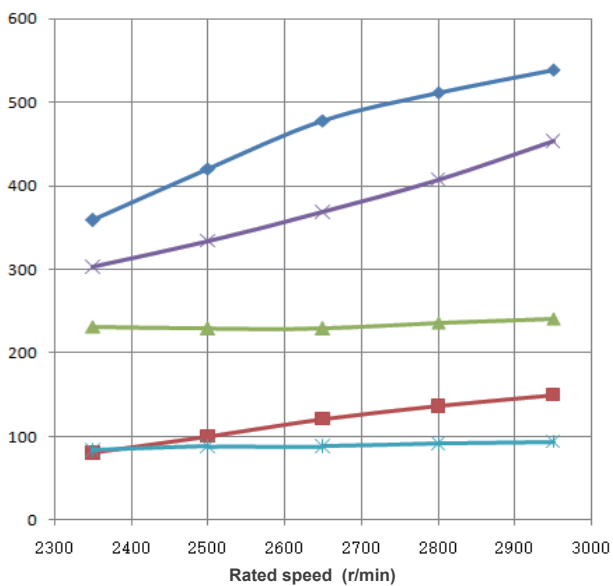
Type: Heat exchange
Inline, Four stroke, Direct injection

Basic parameters

Aspiration	Turbocharging, intercooler
Cylinders No.	6
Bore stroke	105mmx125mm
Total displacement	6.5L
Compression ratio	17.5:1



Performance curve



◆ Torque (N.m) ■ Rated Power (kW) ▲ Fuel consumption (g/kW.h)
 * Lubricating Oil temperature (°C) ✕ Exhaust temperature (°C)

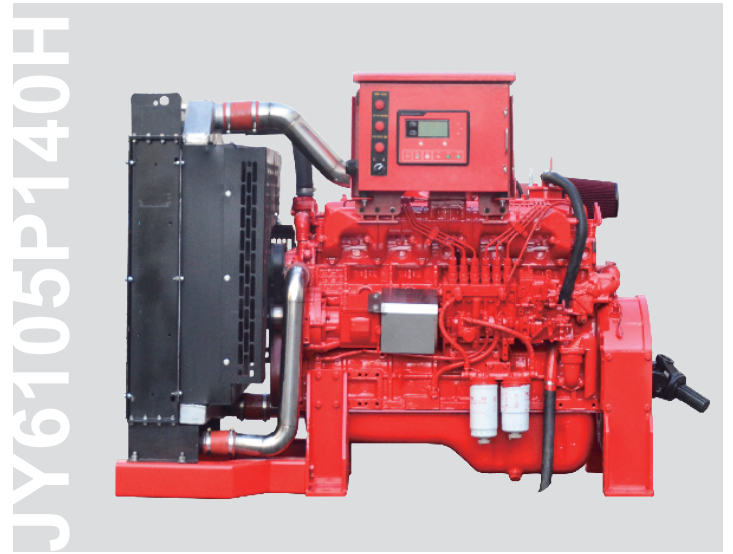
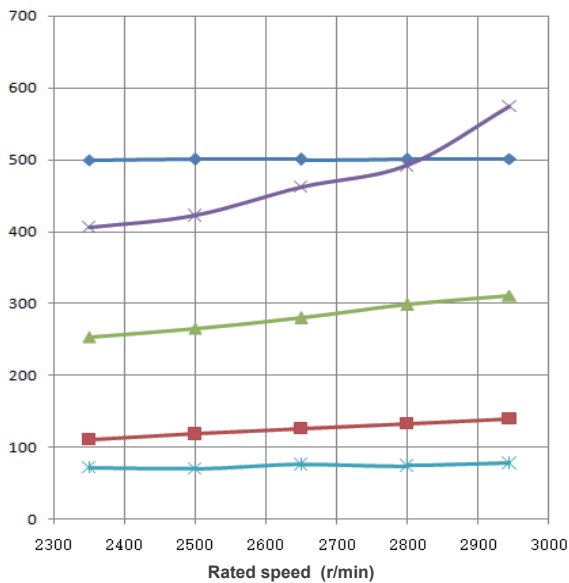
Rated power	201 hp 150 kW	Rated speed	2950 r/min
Rated power	162 hp 121 kW	Rated speed	2650 r/min
Rated power	108 hp 80 kW	Rated speed	2350 r/min
Ldling	750±50 r/min	Rotation direction	Counterclockwise (Viewed from the flywheel end)
Start mode	6.0kW/DC24V Electric Start	Alternator	1000W/DC28V

JY6105P150

Firing order	Heat exchange	Lubricating Oil	Fuel Grade	Battery model		
1-5-3-6-2-4	CH300	CF-4 10W30	NO.2-D	6-QW-120(720) /2 sets/4 pieces		
Raw water flow rate	Specific Fuel Consumption	Lubricating Oil Capacity	Net weight	Dimensions		
				L	W	H
≤610 L/min	≤250 g/KW.h	18L	870±10kg	1411 mm	893 mm	1216 mm

**Basic parameters**

Aspiration	Turbocharging, intercooler
Cylinders No.	6
Bore stroke	105mmx125mm
Total displacement	6.5L
Compression ratio	17.5:1

**Performance curve**

◆ Torque (N.m) ■ Rated Power (kW) ▲ Fuel consumption (g/kW.h)
 * Lubricating Oil temperature (°C) ✕ Exhaust temperature (°C)

Rated power	188 hp 140 kW	Rated speed	2945 r/min
Rated power	169 hp 126 kW	Rated speed	2650 r/min
Rated power	149 hp 111 kW	Rated speed	2350 r/min
Ldling	750±50 r/min	Rotation direction	Counterclockwise (Viewed from the flywheel end)
Start mode	6.0kW/DC24V Electric Start	Alternator	1000W/DC28V

JY6105P140H

Firing order	Air Filter	Lubricating Oil	Fuel Grade	Battery model		
1-5-3-6-2-4	AC95185	CF-4 10W30	NO.2-D	6-QW-120(720) /2 sets/4 pieces		
Raw water flow rate	Specific Fuel Consumption	Lubricating Oil Capacity	Net weight	Dimensions		
				L	W	H
≤610 L/min	≤320 g/KW.h	18L	850±10kg	1663 mm	856 mm	1216 mm

Tel: 0086-570-3010111

Mob/Whatsapp: 0086-15336708099

Email: sales01@91firepump.com



JILIYI FIRE PUMP

Website: www.91firepump.com